



PART OF MAIN FLOOR



MAIN STORE AND OFFICE



SHOW ROOMS SECOND FLOOR



WHOLESALE AND WAREHOUSE

Emanuel Lyons HARDWARE STORE



CAFE - PANAZONE HOTEL

:-: PANAMA :-:



:-: PANAMA :-:



ACCOUNTING OFFICE

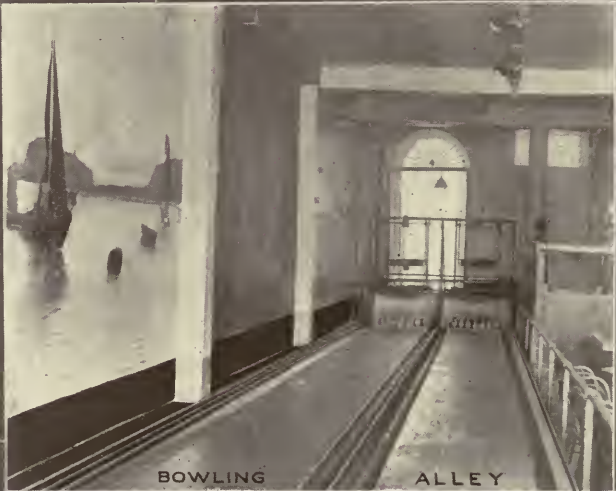
Interior Views
BANCO NACIONAL



CASHIER'S OFFICE



NORMANDIE HOTEL

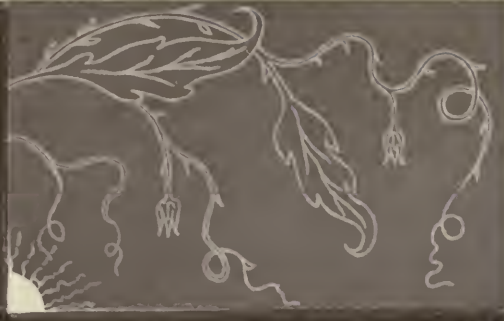


BOWLING ALLEY

:-: PANAMA :-:



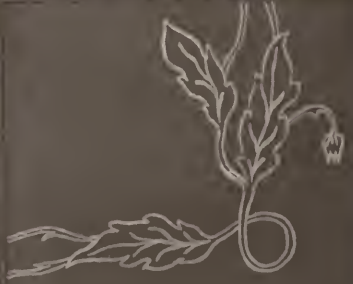
BRANCH - AMERICAN BAZAAR



RESIDENCES OF C.W. MÜLLER
E. LEFEVRE



HOTEL BUILDING JUST COMPLETED BY THE HEIRS OF A. ARIAS F.



BISHOP'S PALACE

:-: P A N A M A :-:

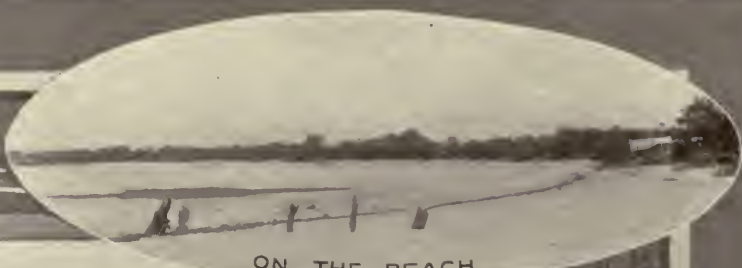


National Navigation Company of Panama. Operating steamships to all Pacific ports of the Republic of Panama; also excursions to Taboga and other points.



The station of the Panama Railroad always presents an active scene. Three passenger trains arrive daily from Colon; four leave for Colon. The coaches are thoroughly up-to-date, having first and second class accommodations.

∴ PANAMA ∴



ON THE BEACH



LAS SABANAS ROAD



LAS SABANAS



ROAD BUILDING BY CONVICTS



SECTION OF JUAN DIAZ ROAD

Much money has been and is being spent in the building of fine, macadamized roads. The I. C. C. undertakes this work in the Canal Zone; the Panamanian Government within its borders. A portion of the Juan Diaz road is shown above. The new carriage road to Old Panama branches off from this road.

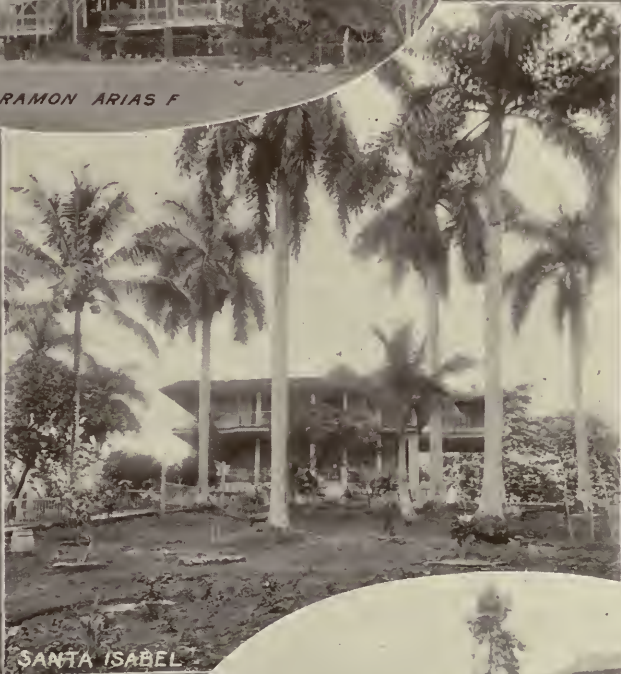
L A S S A B A N A S



MANUEL ESPINOSA B



RAMON ARIAS F



SANTA ISABEL



NATALIO EHRMAN



MANUEL AMADOR GUERRERO, FIRST PRESIDENT OF R.P.

Country Homes

Las Sabanas contains the Summer homes of many of the wealthier people of Panama. Many beautiful houses have been erected in this suburb. It is tropical, because here is the sign-manual of the tropics, the palm, dainty ferns and other luxuriant growths.

OLD PANAMA



INTERIOR OF TOWER



RUINS OF OLD TOWER



OLD FORT



BRIDGE OVERGROWN BY JUNGLE



ANCIENT BRIDGE

The Tower is the most important remaining evidence of the greatness of the first city of Panama, burned by Morgan in 1671. It is located six miles southeast of Panama City, and the trip may be made by carriage or by boat. Two old masonry bridges are to be seen, over which the wealth of Peru was transported centuries ago.

SPORTS



TWO PRODUCTS OF THE ISTHMUS



12 FOOT GATOR



GHORRERA FALLS



A DAY'S HUNT



DAYANO RIVER SCENE

Much of the Isthmus remains in its primeval condition, with deep forests containing deer and other wild animals. The rivers abound with alligators. A picture above shows "Buster" Brown seated on a 15 ft. 8 in. alligator, which was shot three miles from Porto Bello in August, 1909.

INTERIOR REPUBLIC OF PANAMA



CHURCH AT CHARRERA



STREET IN PEQUINI



SAN MIGUEL, PEARL ISLANDS



SWING BRIDGE



RAINY SEASON HOME



NATIVE VILLAGE



POST OFFICE



OLD BELLS AT CRUCES

The interior of the Republic of Panama offers many features of interest for the traveler. Many of the natives live in a primitive state, having thatched roofed houses with walls of bamboo adobe.

THE MEXICAN



At the top of the page are three photographs showing the author and his companions in various scenes of Mexican life. The middle photograph shows a woman in a long dress standing in a field. The right photograph shows a person sitting on a bench or bed in a room with laundry hanging on the wall. Below these are six more photographs arranged in two columns of three. The left column shows a man leading a pack animal up a hill, a woman in a light dress standing in a field, and two men standing in a field. The right column shows a young child, a large group of people in a field, and a man standing next to a pack animal in a field.

VEGETATION



The high palm tree is characteristic of the tropical region. The photograph shows the palm tree in the foreground and the ocean in the background. The photograph shows the palm tree in the foreground and the ocean in the background. The photograph shows the palm tree in the foreground and the ocean in the background.

INDUSTRIES



UP TO DATE FARMING



THE LUSCIOUS PINEAPPLE



TOBACCO PLANTATION



A RANCH-UPPER CHAGRES



MAKING PANAMA HATS-ARRAIJAN, R.P.



GOVERNMENT PALACE BOGAS DEL TORO



A STREET-BOCAS DEL TORO

A great many bunches of bananas are annually shipped to the United States from the province of Bocas del Toro, by the United Fruit Company. Chiriqui province is an important cattle raising and agricultural section. Veraguas and Cocolé export rubber. Los Santos has numerous salt pans, and in Panama and Chiriqui provinces, tobacco is grown. The mining industry is developing and in the Darien has reached considerable importance.

INTERIOR REPUBLIC OF PANAMA



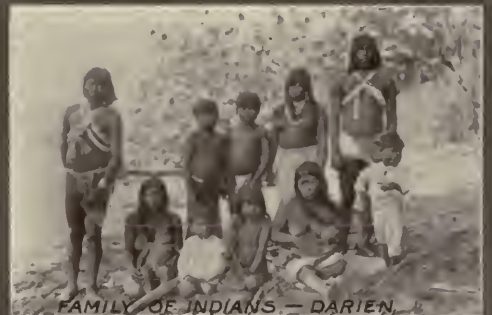
GENERAL VIEW OF CHIRIQUI VOLCANO



CRATER OF CHIRIQUI VOLCANO



HIGHEST POINT,
CHIRIQUI VOLCANO
8000 FEET



FAMILY OF INDIANS — DARIEN



MANGROVES, PINAS



CHORCHA RIVER NEAR DAVID



COCOA PLANTATION CHORCHA



GOLD MINING IN THE DARIEN, PINAS RIVER



VALLEY OF CALDERA RIVER NEAR BOQUETE

These photographs, taken under the greatest difficulties, are the first ever shown of this part of the interior. They were taken by Dr. Otto Lutz, Professor of Natural Science, National Institute, Panama, who was accompanied by his wife, the first white woman ever in the Darien country.